

SAMPLE BALLOT

Pend Oreille County, Washington

Presidential Primary Election

May 24, 2016

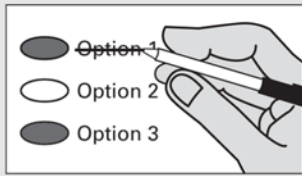
i Instructions

Marking Your Ballot



Use a dark pen to fill in the oval to the left of your choice.
Vote for one. If you vote for more than one, that race will not be counted.
To vote for a candidate not on the ballot, print the name on the dashed line and fill in the oval to the left.

Making A Correction



If you make a mistake, draw a line through the entire candidate's name.
To vote for another candidate, fill in the oval to the left of your new selection.

Important Presidential Primary Voting Instructions

Sign and date the declarations on the return envelope.
For a replacement ballot, contact the Pend Oreille County Auditor's Office at (509) 447-6472.
Deposit your ballot in a ballot drop box no later than 8:00 p.m. Election Day or mail using first class postage. It must be postmarked on or before Election Day.
For a list of the people and organizations that donated to Presidential candidates' campaigns, visit www.fec.gov.

Democratic Party	← OR →	Republican Party
President of the United States Vote for One <input type="radio"/> Hillary Clinton <input type="radio"/> Bernie Sanders <input type="radio"/> -----	Vote Only ONE Party Vote your party selection: Must match your party choice on return envelope. Please refer to the 7 easy steps for voting in the Presidential Primary insert provided with your ballot material.	President of the United States Vote for One <input type="radio"/> Ben Carson <input type="radio"/> Ted Cruz <input type="radio"/> John R. Kasich <input type="radio"/> Donald J. Trump <input type="radio"/> -----

SAMPLE BALLOT COMPILED BY:
MARIANNE NICHOLS, PEND OREILLE COUNTY AUDITOR