

SAMPLE BALLOT

Pend Oreille County, Washington

Primary Election

August 6, 2013

INSTRUCTIONS

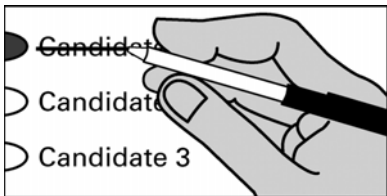
How to Vote

Use a black or blue ink pen to completely fill in the oval provided to the left of your choice.



How to Correct a Mistake

Cross out the entire candidate name or ballot measure response. You then have the option of making another choice.



Optional Write-In

To add a candidate, fill in the oval to the left of the blank line and print the name clearly on the line.



Vote for only one choice for each office or ballot measure, unless the office or ballot measure specifically states otherwise. More than one vote for an office or ballot measure will be an overvote and no votes for that office or ballot measure will be counted.



Who donates to campaigns?

View contributors for candidates and measures

Public Disclosure Commission

www.pdc.wa.gov
Toll Free (877) 601-2828

READ: Each candidate for partisan office may state a political party that he or she prefers. A candidate's preference does not imply that the candidate is nominated or endorsed by the party, or that the party approves of or associates with that candidate.

Legislative - Partisan Office

State Senator, District #7

One Year Unexpired Term
Vote for One

- Mike Brunson
(Prefers Republican Party)
- Brian Dansel
(Prefers Republican Party)
- John Smith
(Prefers Republican Party)
- _____

County - Partisan Office

County Commissioner, District #2

One Year Unexpired Term
Vote for One

- Mark K. Zorica
(Prefers Republican Party)
- Mike Manus
(Prefers Republican Party)
- _____

Fire Protection District #2 - Nonpartisan Office

Commissioner, District #1

Two Year Unexpired Term
Vote for One

- Susan (Sue) Cona
- Jon Carman
- Rick Stone
- _____

**LOCAL ELECTIONS WILL
APPEAR ON THE OFFICIAL
BALLOT ONLY IN THE AREA
ELIGIBLE TO VOTE ON THEM.**

**SAMPLE BALLOT COMPILED BY:
MARIANNE NICHOLS, PEND OREILLE COUNTY AUDITOR**