

SAMPLE BALLOT

Pend Oreille County, Washington

Primary Election

August 17, 2010

INSTRUCTIONS

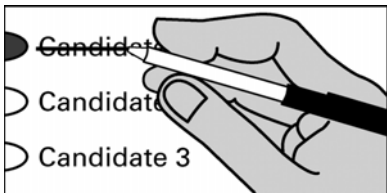
How to Vote

Use a black or blue ink pen to completely fill in the oval provided to the left of your choice.



How to Correct a Mistake

Cross out the entire candidate name or ballot measure response. You then have the option of making another choice.



Optional Write-In

To add a candidate, fill in the oval to the left of the blank line and print the name clearly on the line.



Vote for only one choice for each office or ballot measure, unless the office or ballot measure specifically states otherwise. More than one vote for an office or ballot measure will be an overvote and no votes for that office or ballot measure will be counted.

READ: Each candidate for partisan office may state a political party that he or she prefers. A candidate's preference does not imply that the candidate is nominated or endorsed by the party, or that the party approves of or associates with that candidate.

FEDERAL - Partisan office

United States Senator

6 Year Term
Vote for One

- Norma D. Gruber (Prefers Republican Party)
- Mohammad H. Said (Prefers Centrist Party)
- Goodspaceguy (Prefers Democratic Party)
- Mike The Mover (Prefers Democratic Party)
- Paul Akers (Prefers Republican Party)
- Mike Latimer (Prefers Republican Party)
- James (Skip) Mercer (States No Party Preference)
- Clint Didier (Prefers Republican Party)
- Schalk Leonard (States No Party Preference)
- Patty Murray (Prefers Democratic Party)
- Bob Burr (Prefers Democratic Party)
- William Edward Chovil (Prefers Republican Party)
- Dino Rossi (Prefers Republican Party)
- Charles Allen (Prefers Democratic Party)
- Will Baker (Prefers Reform Party)
-

U. S. Representative, Congressional District #5

2 Year Term
Vote for One

- Randall Yearout (Prefers Constitution Party)
- Daryl Romeyn (Prefers Democratic Party)
- David R. Fox (Prefers Democratic Party)
- Clyde Cordero (Prefers Democratic Party)
- Barbara Lampert (Prefers Democratic Party)
- Cathy McMorris Rodgers (Prefers Republican Party)
-

LEGISLATIVE - Partisan office

State Senator, District #7

4 Year Term
Vote for One

- Bob Morton (Prefers Republican Party)
- Barbara Mowrey (Prefers Democratic Party)
-

State Representative, District #7, Position #1

2 Year Term
Vote for One

- Shelly Short (Prefers Republican Party)
-

State Representative, District #7, Position #2

2 Year Term
Vote for One

- Joel Kretz (Prefers Republican Party)
-

COUNTY - Partisan office

County Assessor

4 Year Term
Vote for One

- James W. McCroskey (Prefers Republican Party)
-

County Auditor

4 Year Term
Vote for One

- Marianne Nichols (Prefers Republican Party)
-

County Clerk

4 Year Term
Vote for One

- Tammie Ownbey (Prefers Republican Party)
-

COUNTY - Partisan office	JUDICIAL - Nonpartisan office	Election of Political Party Precinct Committee Officer
<p>County Commissioner, District #2 4 Year Term Vote for One</p> <p><input type="radio"/> Laura Merrill (Prefers Republican Party)</p> <p><input type="radio"/> Brad Stratton (Prefers Democratic Party)</p> <p><input type="radio"/> _____</p>	<p>State Supreme Court Justice, Position #1 6 Year Term Vote for One</p> <p><input type="radio"/> Stan Rumbaugh Nonpartisan</p> <p><input type="radio"/> Jim Johnson Nonpartisan</p> <p><input type="radio"/> _____</p>	<p>Precinct Committee Officer is a position in each major political party. For this office only: If you consider yourself a Democrat or Republican, you may vote for a candidate of that party.</p> <p>VOTE FOR ONLY ONE</p> <p>For a write-in candidate, include party.</p>
<p align="center">COUNTY COMMISSIONERS WILL ONLY APPEAR ON THE OFFICIAL BALLOT IN THEIR OWN DISTRICTS IN THE PRIMARY.</p>	<p>State Supreme Court Justice, Position #5 6 Year Term Vote for One</p> <p><input type="radio"/> Barbara Madsen Nonpartisan</p> <p><input type="radio"/> _____</p>	<p>PRECINCT COMMITTEE OFFICER - Partisan office</p> <p>Precinct Committee Officer 2 Year Term Vote for One</p> <p><input type="radio"/> _____</p>
	<p>State Supreme Court Justice, Position #6 6 Year Term Vote for One</p> <p><input type="radio"/> Bryan Chushcoff Nonpartisan</p> <p><input type="radio"/> Charlie Wiggins Nonpartisan</p> <p><input type="radio"/> Richard B. Sanders Nonpartisan</p> <p><input type="radio"/> _____</p>	<p>SOUTH PEND OREILLE FIRE PROTECTION DISTRICT</p> <p>Special Election Proposition #1</p> <p>Submitted by: SOUTH PEND OREILLE FIRE & RESCUE – BOARD OF COMMISSIONERS</p>
	<p>Court of Appeals Judge, Division 3, District #1, Position #1 2 Year Unexpired Term Vote for One</p> <p><input type="radio"/> Laurel Siddoway Nonpartisan</p> <p><input type="radio"/> Harvey Dunham Nonpartisan</p> <p><input type="radio"/> _____</p>	<p>PROPOSITION AUTHORIZING PROPERTY TAX LEVY</p> <p>The board of Commissioners of South Pend Oreille Fire & Rescue adopted Resolution No. 05-13-2010 concerning a proposition to increase its regular property tax levy for maintenance and operations to an amount not to exceed \$0.98 per \$1,000.00 of assessed valuation to be levied in 2010 for collection in 2011. The maximum allowable levy in 2010 shall serve as the base for computing subsequent levy limitations as provided by chapter 84.55 RCW. Should this proposition be:</p>
<p>County Prosecuting Attorney 4 Year Term Vote for One</p> <p><input type="radio"/> Thomas A. Metzger (Prefers Democratic Party)</p> <p><input type="radio"/> _____</p>		<p><input type="radio"/> Approved</p> <p><input type="radio"/> Rejected</p>
<p>County Sheriff 4 Year Term Vote for One</p> <p><input type="radio"/> Ron Froman (Prefers Independent Party)</p> <p><input type="radio"/> Alan A. Botzheim (Prefers Republican Party)</p> <p><input type="radio"/> Jack Hall (States No Party Preference)</p> <p><input type="radio"/> Robert "Bob" Wilson (Prefers Republican Party)</p> <p><input type="radio"/> _____</p>		<p>County Treasurer 4 Year Term Vote for One</p> <p><input type="radio"/> Terri Miller (Prefers Democratic Party)</p> <p><input type="radio"/> _____</p>
<p align="center">LOCAL ELECTIONS WILL APPEAR ON THE OFFICIAL BALLOT ONLY IN THE AREA ELIGIBLE TO VOTE ON THEM.</p>		

**SAMPLE BALLOT COMPILED BY:
MARIANNE NICHOLS, PEND OREILLE COUNTY AUDITOR**