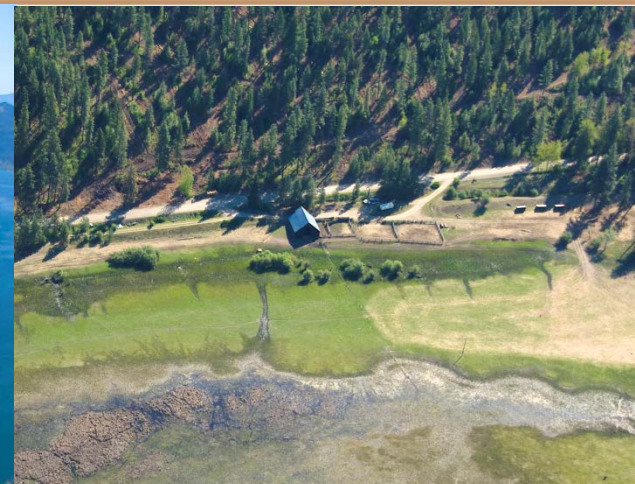


# Pend Oreille County Voluntary Stewardship Program



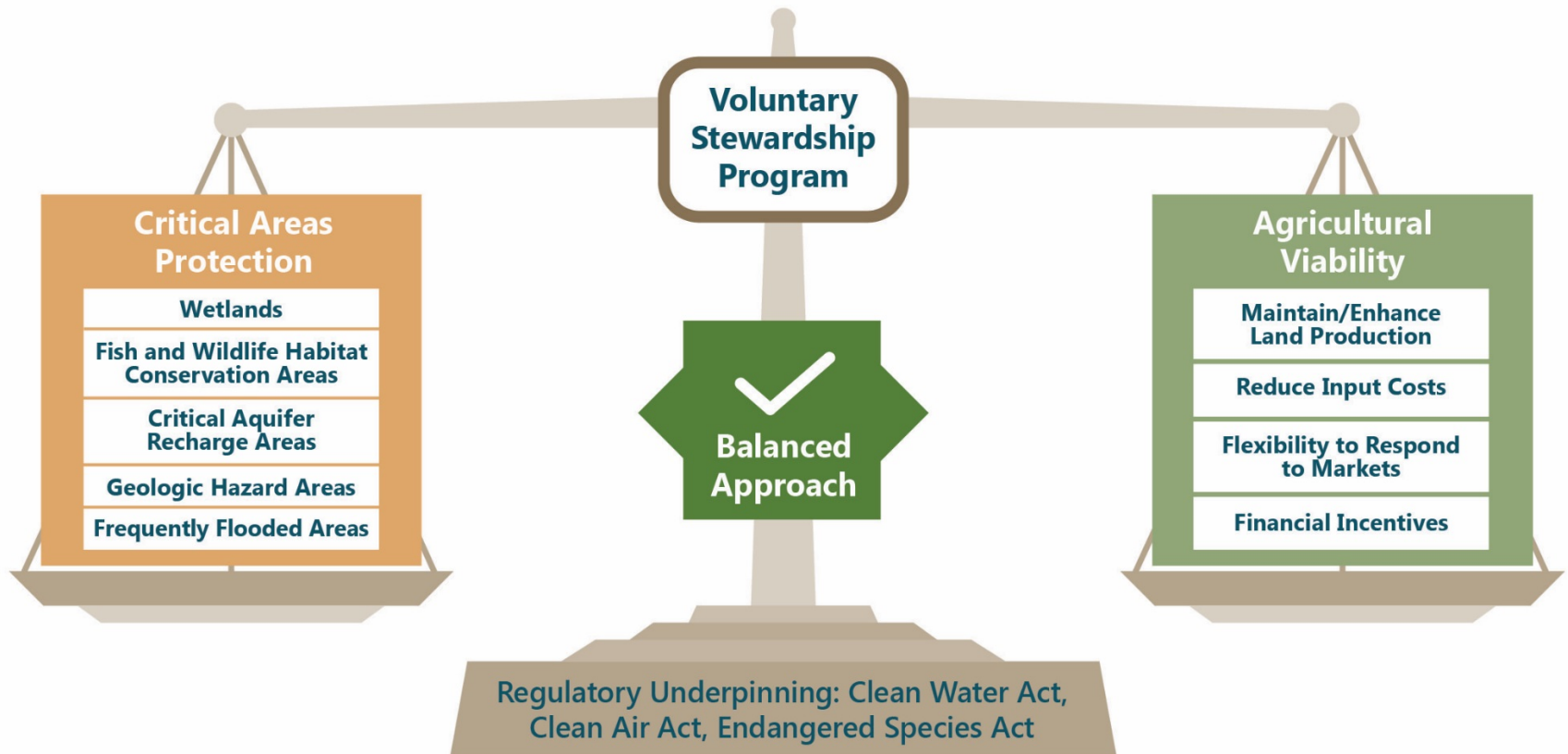
©2007 Washington State Department of Ecology

# Agenda

- Welcome and Introductions
- VSP Process Overview
- Work Group Roles and Responsibilities
- Discuss Ground Rules
- Conceptual Overview of VSP Work Plan Elements
- Work Plan: Discuss Chapters 1 through 3
- Next Steps

# VSP Overview

# VSP Background and Purpose



# VSP Statutory Timeline

- Deadline for Work Plan approval to Technical Panel
  - August 2, 2018
- Periodic Evaluations (every 2 years)
  - Status of VSP accomplishments
  - Evaluations due 2020 and ongoing
- Reporting (every 5 years)
  - Progress report on meeting VSP goals and benchmarks
  - Status reports due: 2022, 2027, and ongoing
- Adaptive Management (ongoing)
  - Track indicators and adjust conservation practices emphasis accordingly

# State Technical Panel Feedback on Submitted Plans

- Provide clear discussion on outreach and formation of the Work Group
- Demonstrate that producer participation and conservation practices are having the desired effect on critical area functions and values (protect functions existing on July 22, 2011)
- Clearly establish baseline monitoring approach that considers:
  - Watershed- or County-wide scale protection of critical area functions
  - Protection of producer privacy
  - Includes monitoring indicators, such as aerial imagery to help track changes in habitat, including enhancements over time

# Roles & Responsibilities

# Roles and Responsibilities

- State – Approval and Administration
  - Washington State Conservation Commission
  - VSP Technical Panel
  - VSP Statewide Advisory Committee
- Local – Administration and Work Plan Development
  - Pend Oreille County
  - Pend Oreille Conservation District
  - Pend Oreille County Work Group
- Agricultural Producers – Outreach/Implementation



# Roles and Responsibilities – White Bluffs and Anchor QEA

- Facilitate Work Group meetings
- Support Work Group in writing a Work Plan for submittal to the State Technical Panel
  - Provide environmental science support
  - Incorporate existing draft Work Plan elements into updated outline (primarily update organization within existing draft outline)
  - Incorporate existing data into baseline conditions summary
  - Apply historic stewardship participation data to a baseline monitoring approach and measurable benchmarks
  - Develop maps and GIS data summaries
- Facilitate State Technical Panel review process

# Ground Rules

# Discuss Ground Rules

- Work Group Ground Rules
  - Respect everyone and their interests.
  - Suspend assumptions, listen carefully, and speak to educate.
  - Open dialogue.
  - No individual member will speak to the media as a representative of the group without the consent of the group.
- Discuss ground rules handout

# Work Plan Overview

# VSP Work Plan Outline

1. Introduction
2. Regional Setting
3. Baseline Conditions
4. Protection and Enhancement Strategies
5. Goals, Benchmarks, and Adaptive Management
6. Implementation

# Section 1: Introduction

- Introduce VSP Background
- Summarize the Work Plan organization
- Describe Roles and Responsibilities
  - Describe outreach and Work Group formation process
  - Define state, local, and individual roles and responsibilities

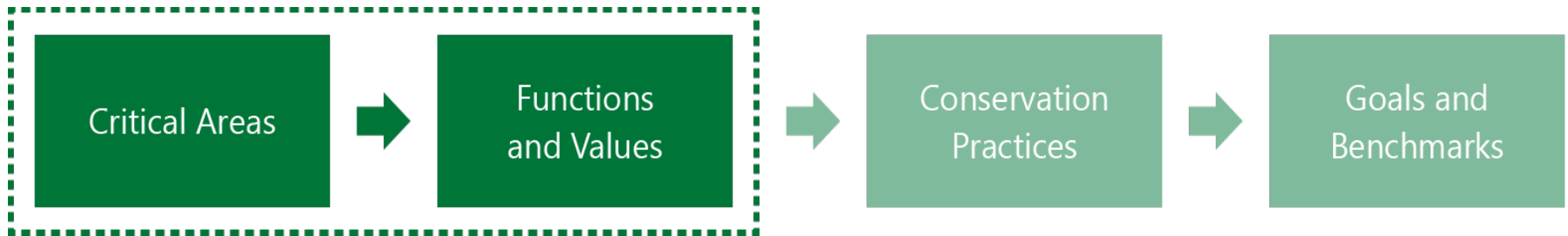
# Section 2: Regional Setting

- Describe County's profile
  - Water resources, precipitation, soil, and land cover and ownership
- Describe agricultural activities in County
- Define critical areas and associated functions and value
- Discuss analysis units and County agricultural



# Section 3: Baseline and Existing Conditions

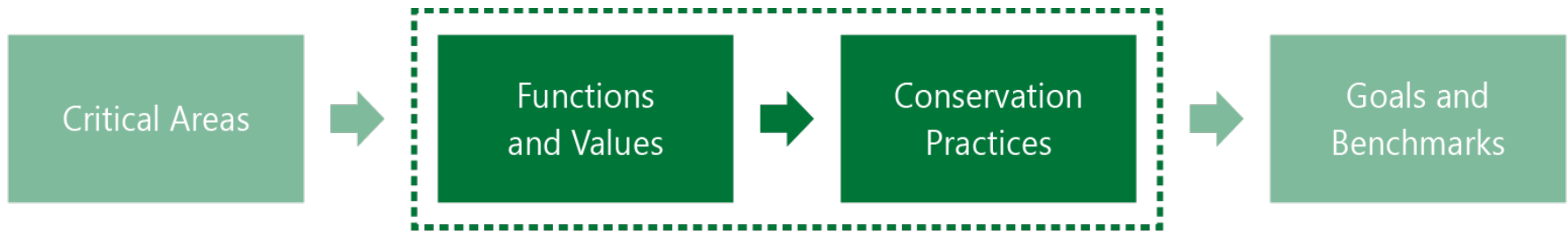
- Describe critical area intersection with agriculture
- Describe critical area functions and values on agricultural lands and County-wide
- Discuss agricultural viability - strengths, weaknesses, opportunities, and threats in the County





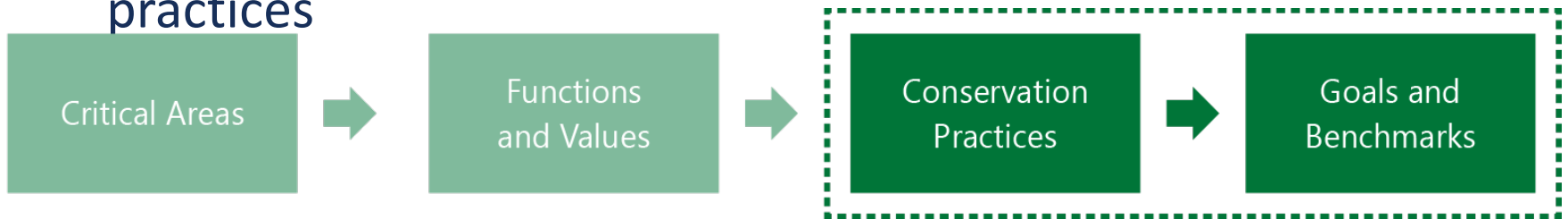
# Section 4: Protection and Enhancement Strategies

- Introduce key conservation practices that protect or enhance critical areas functions and values on ag lands
- Describe participation in key conservations practices since 2011 baseline
  - Summarize historical participation data
  - Discuss key conservation practices, programs, and technical assistance providers
  - Review example of stewardship activity on ag lands in County



# Section 5: Goals, Benchmarks, and Adaptive Management

- Set goals and objectives for each critical area and ag viability
  - Include description of existing plans and programs that support identified goals and objectives
- Define measurable benchmarks for protection and enhancement
  - Base on participation in key conservation practices that protect critical area functions and values and promote ag viability
- Discuss key practices that contribute to objectives
- Discuss benchmarks based on maintaining participation in key practices



# Section 5: Goals, Benchmarks, and Adaptive Management continued

- Describe monitoring indicators that will be used to help inform adaptive management
  - Direct (track producer participation)
  - Indirect (monitor existing data sources)
- Define adaptive management plan
- Discuss monitoring indicators (existing data sources, aerial imagery)

# Section 6: Implementation

- Describe framework for implementation (including budget)
- Describe technical assistance providers and outreach methods
  - Provide overview of existing programs and funding sources
  - Consider VSP checklist
- Describe reporting requirements
  - Statutory timelines for reporting, monitoring, and adaptive management procedures
- Discuss implementation and outreach

# Discuss Draft Chps. 1 - 3

# Next Steps

- Upcoming meeting dates
- April 5<sup>th</sup>, May 1<sup>st</sup>, June 5th
- Upcoming topics:
  - Critical areas functions and values
  - Agricultural viability
  - Key stewardship strategies and practices