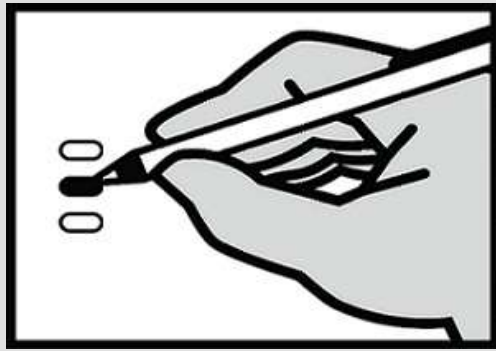


**Pend Oreille County, Washington  
General Election Official Sample Ballot  
November 3, 2020**

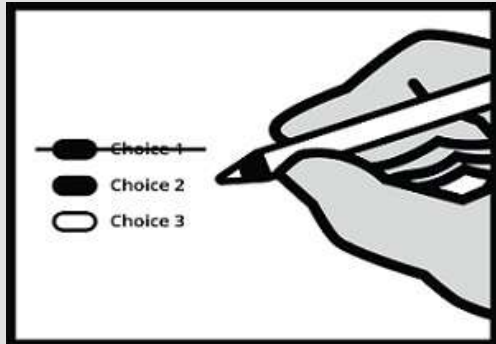
**Instructions**

**How to Vote**



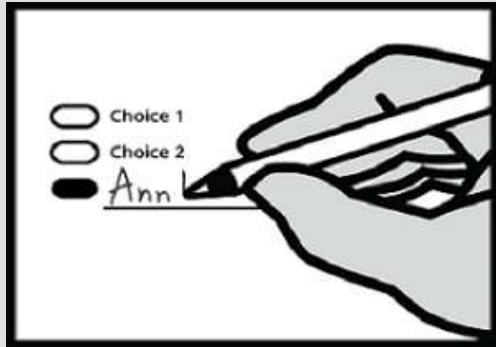
Use a dark blue or black ink pen to completely fill in the oval to the left of your choice. Vote for one in each race. If you vote for more than one, no votes will be counted for that race.

**If you make a mistake**



Draw a line through the entire measure response or candidate's name. Then you may make another choice.

**Optional write-in**



To vote for a candidate not listed for that race, fill in the oval to the left of the line and print the name of the candidate.



**Who donates to campaigns?**  
View contributors for candidates and measures

**Public Disclosure Commission**  
www.pdc.wa.gov  
Toll Free (877) 601-2828

**State Measures - Referendum Measure**

**Referendum Measure No. 90**

The legislature passed Engrossed Substitute Senate Bill 5395 concerning comprehensive sexual health education. This bill would require school districts to adopt or develop, consistent with state standards, comprehensive age-appropriate sexual health education, as defined, for all students, and excuse students if their parents request.

Should this bill be:

- Approved
- Rejected

**Start Voting Here**

**State Measures - Advisory Vote**

**Advisory Vote No. 32  
Engrossed Substitute Senate Bill 5323**

The legislature imposed, without a vote of the people, a retail sales tax on pass-through charges retail establishments collect for specified carryout bags, costing \$32,000,000 in its first ten years, for government spending.

This tax increase should be:

- Repealed
- Maintained

**Advisory Vote No. 33  
Substitute Senate Bill 5628**

The legislature imposed, without a vote of the people, a tax on heavy equipment rentals to consumers by heavy equipment rental property dealers, costing \$103,000,000 in its first ten years, for government spending.

This tax increase should be:

- Repealed
- Maintained

**Advisory Vote No. 34  
Engrossed Substitute Senate Bill 6492**

The legislature increased, without a vote of the people, the business and occupation tax rate for certain businesses, while reducing certain surcharges, costing \$843,000,000 in its first ten years, for government spending.

This tax increase should be:

- Repealed
- Maintained

**State Measures - Advisory Vote**

**Advisory Vote No. 35  
Engrossed Senate Bill 6690**

The legislature increased, without a vote of the people, the business and occupation tax on manufacturers of commercial airplanes, including components or tooling, costing \$1,024,000,000 in its first ten years, for government spending.

This tax increase should be:

- Repealed
- Maintained

**State Measures - Proposed Constitutional Amendment**

**Engrossed Senate Joint Resolution No. 8212**

The legislature has proposed a constitutional amendment on investment of public funds. This amendment would allow public money held in a fund for long-term care services and supports to be invested by governments as authorized by state law, including investments in private stocks.

Should this constitutional amendment be:

- Approved
- Rejected

**Vote Both Sides of Ballot**

**Federal - Partisan Office**

**President and Vice President of the United States**

- Joseph R. Biden / Kamala D. Harris**  
Democratic Party Nominees
- Donald J. Trump / Michael R. Pence**  
Republican Party Nominees
- Jo Jorgensen / Jeremy "Spike" Cohen**  
Libertarian Party Nominees
- Howie Hawkins / Angela Walker**  
Green Party Nominees
- Gloria La Riva / Sunil Freeman**  
Socialism and Liberation Party Nominees
- Alyson Kennedy / Malcolm M. Jarrett**  
Socialist Workers Party Nominees

**Federal - Partisan Office**

**U.S. Representative, Congressional District No. 5**

- Cathy McMorris Rodgers**  
(Prefers Republican Party)
- Dave Wilson**  
(Prefers Democratic Party)

**State - Partisan Office**

**Governor**

- Jay Inslee**  
(Prefers Democratic Party)
- Loren Culp**  
(Prefers Republican Party)

**Lt. Governor**

- Denny Heck**  
(Prefers Democratic Party)
- Marko Liias**  
(Prefers Democratic Party)

**Secretary of State**

- Kim Wyman**  
(Prefers Republican Party)
- Gael Tarleton**  
(Prefers Democratic Party)

**State Treasurer**

- Mike Pellicciotti**  
(Prefers Democratic Party)
- Duane A. Davidson**  
(Prefers Republican Party)

**State Auditor**

- Pat (Patrice) McCarthy**  
(Prefers Democratic Party)
- Chris Leyba**  
(Prefers Republican Party)

**READ: Each candidate for President and Vice President is the official nominee of a political party. For other partisan offices, each candidate may state a political party that he or she prefers. A candidate's preference does not imply that the candidate is nominated or endorsed by the party, or that the party approves with that candidate.**

If a primary election was held for an office, the two candidates who received the most votes in the Primary advance to the General Election.

Each candidate for partisan office may state a political party that he or she prefers. A candidate's preference does not imply that the candidate is nominated or endorsed by the party, or that the party approves of or associates with that candidate.

The election for President and Vice President is different. Candidates for President and Vice President are the official nominees of their political party.

## State - Partisan Office

### Attorney General

- Bob Ferguson**  
(Prefers Democratic Party)
- Matt Larkin**  
(Prefers Republican Party)
- \_\_\_\_\_

### Commissioner of Public Lands

- Hilary Franz**  
(Prefers Democratic Party)
- Sue Kuehl Pederson**  
(Prefers Republican Party)
- \_\_\_\_\_

## State - Nonpartisan Office

### Superintendent of Public Instruction

- Chris Reykdal**
- Maia Espinoza**
- \_\_\_\_\_

## State - Partisan Office

### Insurance Commissioner

- Mike Kreidler**  
(Prefers Democratic Party)
- Chirayu Avinash Patel**  
(Prefers Republican Party)
- \_\_\_\_\_

## Legislative - Partisan Office

### State Representative, District No. 7, Position No. 1

- Jacquelin Maycumber**  
(Prefers Republican Party)
- Georgia D. Davenport**  
(Prefers Democratic Party)
- \_\_\_\_\_

### State Representative, District No. 7, Position No. 2

- Joel Kretz**  
(Prefers Republican Party)
- JJ Wandler**  
(Prefers Independent Party)
- \_\_\_\_\_

## County - Partisan Office

### County Commissioner, District No. 1

- John Gentle**  
(Prefers Republican Party)
- Phyllis Jean Kardos**  
(Prefers Democrat Party)
- \_\_\_\_\_

### County Commissioner, District No. 3

- Brian Smiley**  
(Prefers Republican Party)
- Paul F Mahre**  
(Prefers Independent Party)
- \_\_\_\_\_

## Public Utility District - Nonpartisan Office

### Commissioner, District No. 2

- Curt Knapp**
- Luke Smith**
- \_\_\_\_\_

## Judicial - Nonpartisan Office

### State Supreme Court Justice, Position No. 3

Short & 6 Year Term

- Dave Larson**
- Raquel Montoya-Lewis**
- \_\_\_\_\_

### State Supreme Court Justice, Position No. 4

- Charles W. Johnson**
- \_\_\_\_\_

### State Supreme Court Justice, Position No. 6

2 Year Unexpired Term

- Richard S. Serns**
- G. Helen Whitener**
- \_\_\_\_\_

### State Supreme Court Justice, Position No. 7

- Debra L. Stephens**
- \_\_\_\_\_

### Court of Appeals, Division No. 3, District No. 1, Judge Position 2

- Marshall Casey**
- Tracy Arlene Staab**
- \_\_\_\_\_

### Superior Court Judge, Position No. 1

- Patrick A. Monasmith**
- \_\_\_\_\_

### Superior Court Judge, Position No. 2

- Jessica Taylor Reeves**
- \_\_\_\_\_

## Sacheen Lake Water & Sewer District

### Special Election - Proposition No. 1

#### ONE YEAR EXCESS LEVY FOR MAINTENANCE AND OPERATION

Shall the following taxes, in excess of regular, non-voted property tax levies, for operation and maintenance purposes be levied for Sacheen Lake Water and Sewer District's General Fund upon all taxable property within the District;

A tax of approximately \$.75 per thousand dollars of assessed valuation (based on true and fair value) to provide \$67,432.00, said levy to be made in 2020 for collection in 2021.

- Yes, Levy**
- No, Levy**

**Vote Both  
Sides  
of Ballot**